

### 3 Specification sheet

For standard system only.

|  |  |
|--|--|
| Rotor speed (60 Hz)  | 3600 rpm                               |
| Circumferential speed on the outside of the rotor                    | 19 m/s                                 |
| Rotor speed (50 Hz)  | 3000 rpm                               |
| Circumferential speed on the outside of the rotor                    | 16,1 m/s                               |
| <b>Max. permissible product temperature</b>                          |  |
|  | 120 °C with FPM sealing                |
|  | 160 °C with FFPM sealing               |
| <b>Max. permissible temperature of double casing</b>                 |  |
|  | 120 °C with FPM sealing                |
|  | 160 °C with FFPM sealing               |
| <b>Max. permissible operating overpressure</b>                       |  |
|  | 10 bar                                 |
| <b>Max. throughput rates</b>   |  |
| The values apply to the standard speed of 3000/3600 rpm, water 20 °C |  |
| Generators 4M  | approx. 5000 liters/h                  |
| with standard mixing tool  | with standard mixing tool              |
| <b>Connections</b>   |  |
| Liquid inlet   | Tri-Clamp 2"                           |
| Liquid outlet  | Tri-Clamp 2"                           |
| Cleaning connection  | Tri-Clamp 1/2"                         |
| <b>Materials</b>   |  |
| Product-contacting parts   | Stainless steel 1.4404/316 L           |
| Inlet flange, mixing tool  | Stainless steel 1.4404/316 L           |
| Lantern, motor flange  | Al (AlCuMgPb)                          |
| base frame   | Steel with chemical-resistant painting |
| single-acting axial face seal  | Q1Q1VMG                                |
| Elastomeric thermosiphon   | FPM                                    |
| <b>Three-phase AC motor</b>  |  |
| Operating voltage  | 230/460V                               |
| Frequency  | 50/60 Hz                               |
| Capacity   | 15hp                                   |
| Motor speed (50Hz)   | 3000/3600 min-1                        |
| Protection category  | IP 54                                  |
| Insulation class   | F                                      |
| Explosion protection   | without                                |

### 3.1 Measurements and weight:

For standard units only.  
Also see unit installation drawings.

|         |                |          |
|---------|----------------|----------|
| Height: | approx. 435 mm | 17.13 in |
| Length: | approx. 736 mm | 29 in    |
| Width:  | approx. 400 mm | 15.75in  |
| Weight: | approx. 160 kg | 353lbs   |

## 4 Installation

### 4.1 Securing the machine

The machine can be set up using just the base frame.

### 4.2 Connecting product lines

The machine has 2 connections for products lines and one cleaning connection.  
The horizontal connection (704) is for the introduction of material.  
The vertical connection for the product discharge is located in the dispersion chamber (710).Below this there is also the cleaning connection.

### 4.3 Power supply



Info

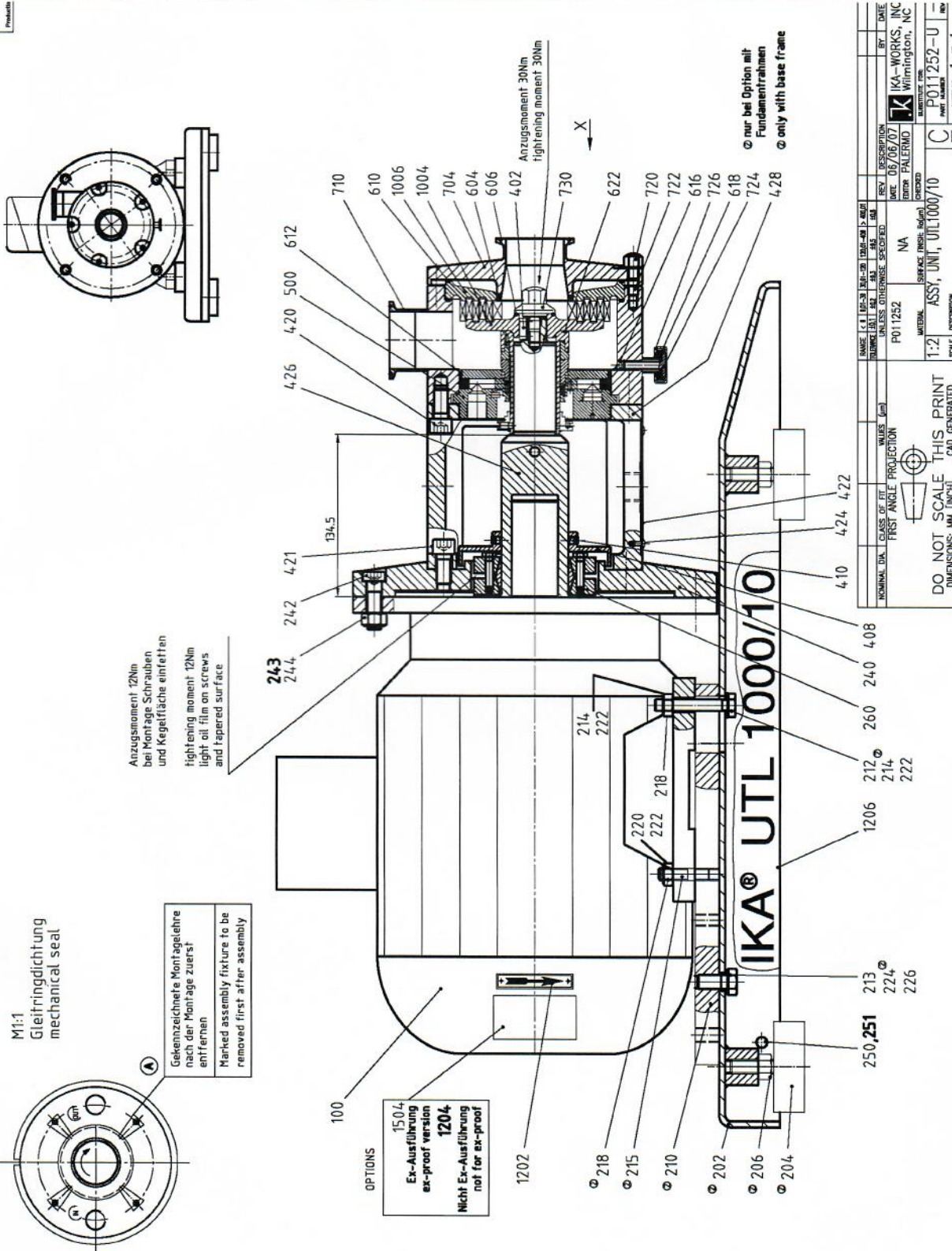
The device connection must comply with VDE standards. Ensure that the motor voltage for the motor connection and the main voltage are identical. The motor voltage is indicated on the motor rating plate or in the technical data sheet.



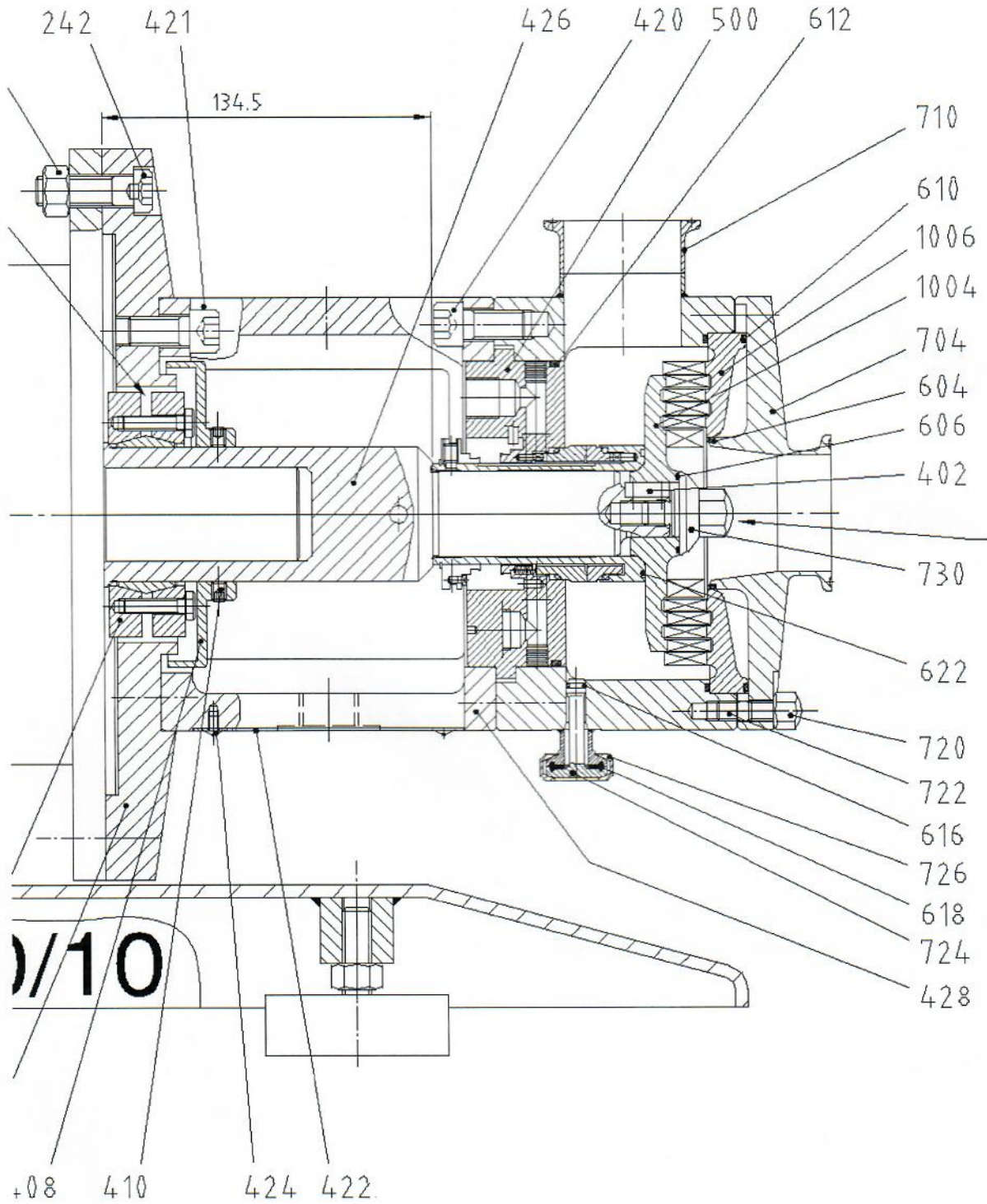
Danger

- Repair work on the machine's electrical equipment may only be carried out by qualified electricians.
- Check electrical equipment on a regular basis.
- Secure loose connections.
- Replace damaged lines/cables immediately.
- Always keep the switching cabinet closed. Access is only permitted to authorized personnel with the appropriate keys/tools.
- Never clean switching cabinets or other electrical equipment enclosures by spraying with a water pipe.

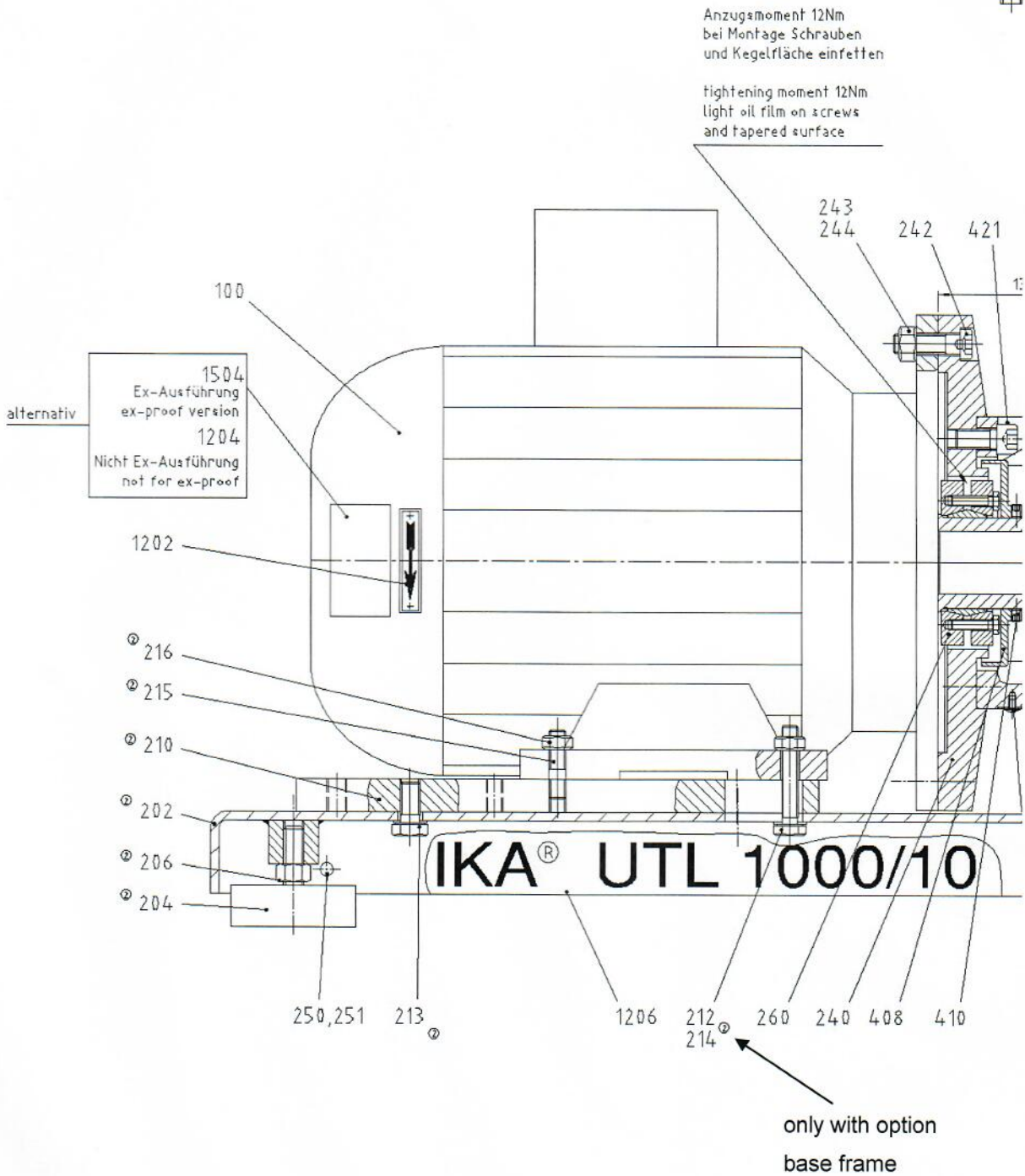
# 11 Assembly unit drawing P011252 U



11.1 Detail 1 of assembly drawing

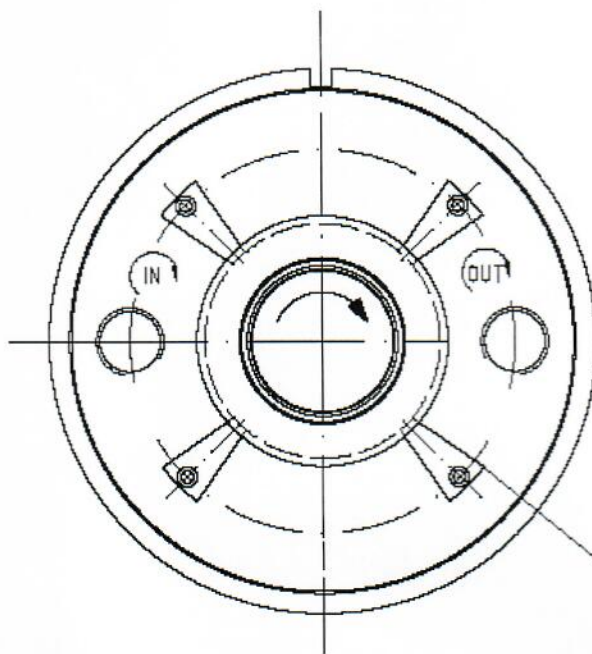


**11.2 Detail 2 of assembly drawing**



12 Detail of mechanical seal cartridge

M1:1  
Gleitringdichtung  
mechanical seal



A

Gekennzeichnete Montagelehre  
nach der Montage zuerst  
entfernen

Marked assembly fixture to be  
removed first after assembly